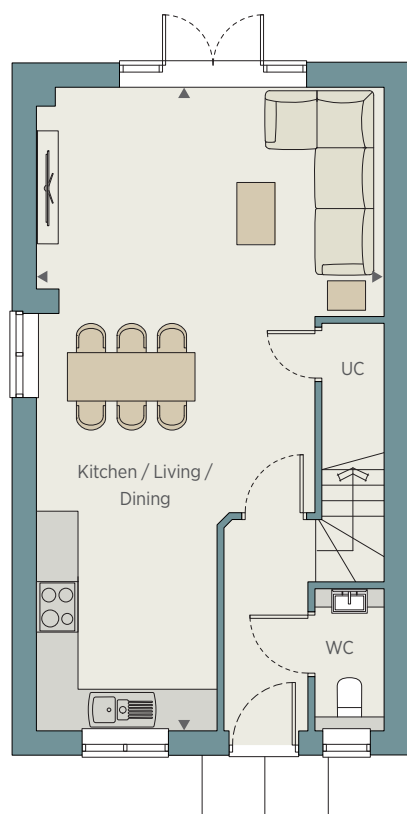




ARIEL HOUSE (PLOT 1), AUGUST HOUSE (PLOT 2), BARON HOUSE (PLOT 3) & BURLINGTON HOUSE (PLOT 5) | 3 BEDROOM HOME

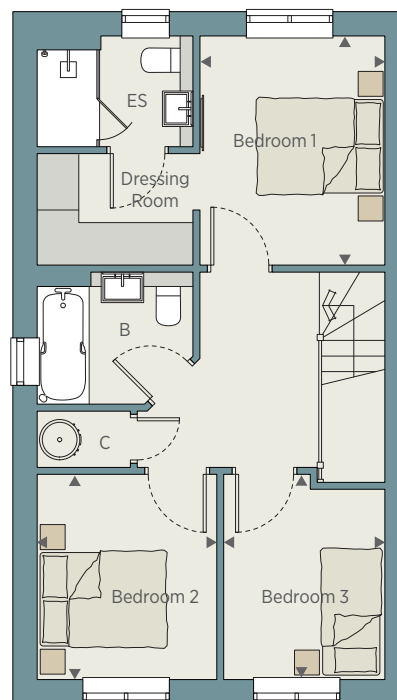


SEE SPECIFICATION PAGE FOR DETAILS



GROUND FLOOR

Kitchen / Living / Dining 9.30m x 5.02m 30'6" x 16'6"



FIRST FLOOR

Bedroom 1	3.31m x 2.67m	10'10" x 8'9"
Bedroom 2	2.96m x 2.62m	9'8" x 8'7"
Bedroom 3	2.96m x 2.32m	9'8" x 7'7"

**Total area 93 sq m 1,003 sq ft - Loft space 26.4 sq m 284 sq ft (plots 1 & 2) 13.4 sq m 144 sq ft (plots 3 & 5)**

UC - Utility Cupboard C - Cupboard B - Bathroom ES - En suite

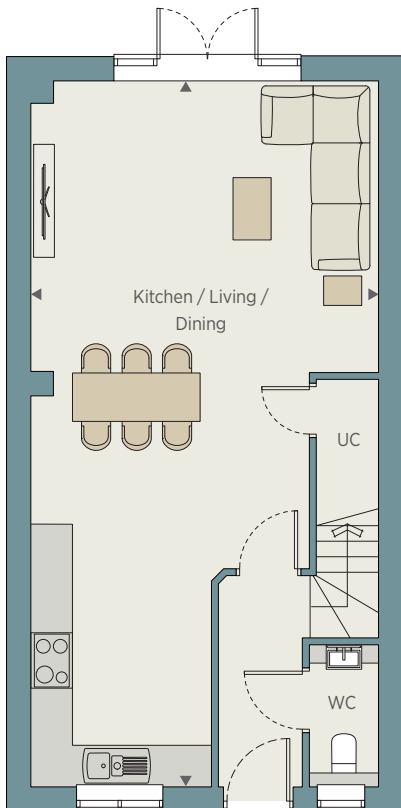
All room dimensions are subject to a +/- 50mm (2") tolerance. Kitchen and bathroom layouts are indicative only and may be subject to change. Please consult the Sales Advisor for specific room dimensions and internal layouts. This information is for guidance only and does not form any part of any contract or constitute a warranty. Computer generated illustration indicative only.



BLOUNT HOUSE (PLOT 4) | 3 BEDROOM HOME

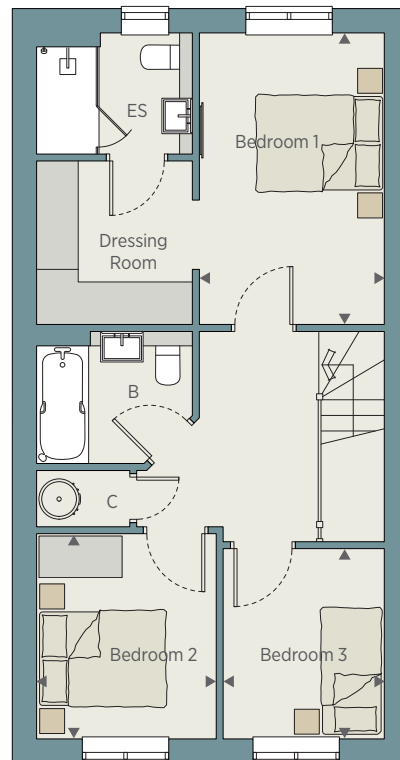


SEE SPECIFICATION PAGE FOR DETAILS



GROUND FLOOR

Kitchen / Living / Dining 10.19m x 5.04m 33'5" x 16'6"



FIRST FLOOR

Bedroom 1	4.22m x 2.67m	13'10" x 8'9"
Bedroom 2	2.95m x 2.59m	9'8" x 8'6"
Bedroom 3	2.75m x 2.33m	9'0" x 7'8"

**Total area 102 sq m 1,102 sq ft - Loft space 24.8 sq m 267 sq ft**

UC - Utility Cupboard C - Cupboard B - Bathroom ES - En suite



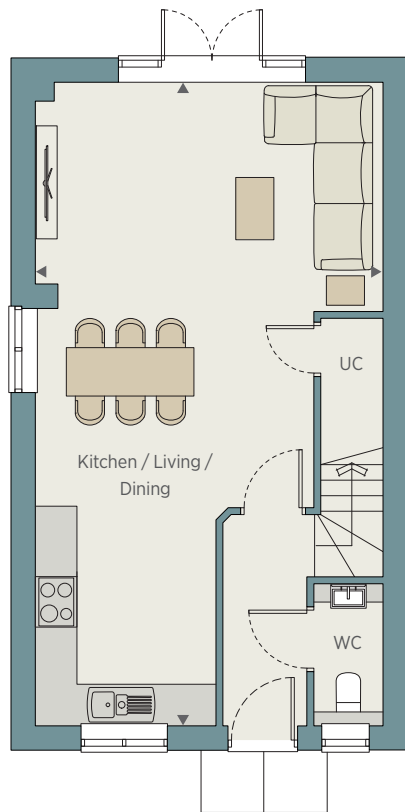
PLOT 7

PLOT 6

CHARM HOUSE (PLOT 6) & DANE HOUSE (PLOT 7) | 3 BEDROOM HOME

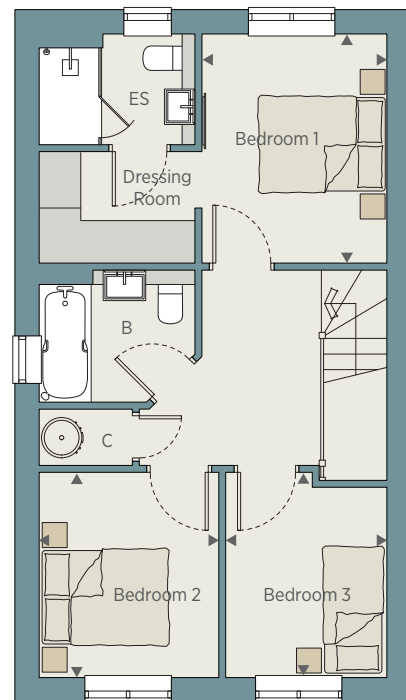


SEE SPECIFICATION PAGE FOR DETAILS



GROUND FLOOR

Kitchen / Living / Dining 9.30m x 5.02m 30'6" x 16'6"



FIRST FLOOR

Bedroom 1	3.31m x 2.67m	10'10" x 8'9"
Bedroom 2	2.96m x 2.62m	9'8" x 8'7"
Bedroom 3	2.96m x 2.32m	9'8" x 7'7"

**Total area 93 sq m 1,003 sq ft - Loft space 16.1 sq m 173 sq ft**

UC - Utility Cupboard C - Cupboard B - Bathroom ES - En suite

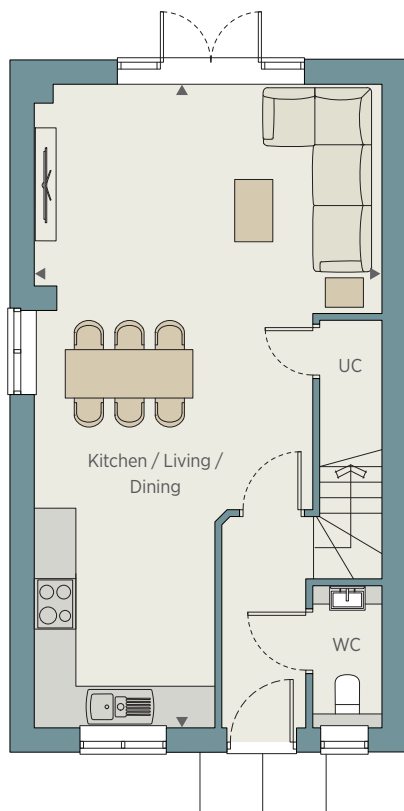
All room dimensions are subject to a +/- 50mm (2") tolerance. Kitchen and bathroom layouts are indicative only and may be subject to change. Please consult the Sales Advisor for specific room dimensions and internal layouts. This information is for guidance only and does not form any part of any contract or constitute a warranty. Computer generated illustration indicative only.



DIVINE HOUSE (PLOT 8) & FOREST HOUSE (PLOT 9) | 3 BEDROOM HOME

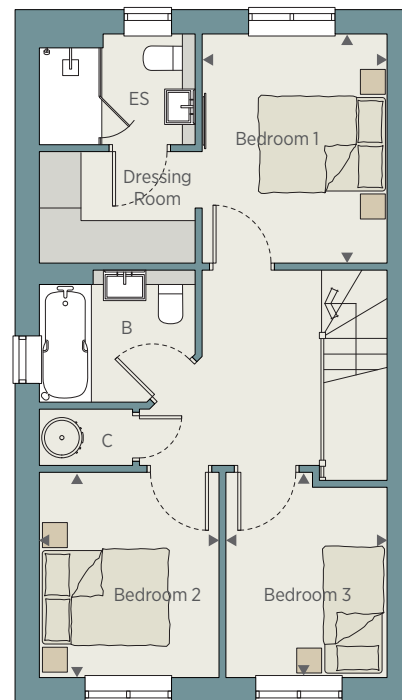


SEE SPECIFICATION PAGE FOR DETAILS



GROUND FLOOR

Kitchen / Living / Dining 9.30m x 5.02m 30'6" x 16'6"



FIRST FLOOR

Bedroom 1	3.31m x 2.67m	10'10" x 8'9"
Bedroom 2	2.96m x 2.62m	9'8" x 8'7"
Bedroom 3	2.96m x 2.32m	9'8" x 7'7"

**Total area 93 sq m 1,003 sq ft - Loft space 16.1 sq m 173 sq ft**

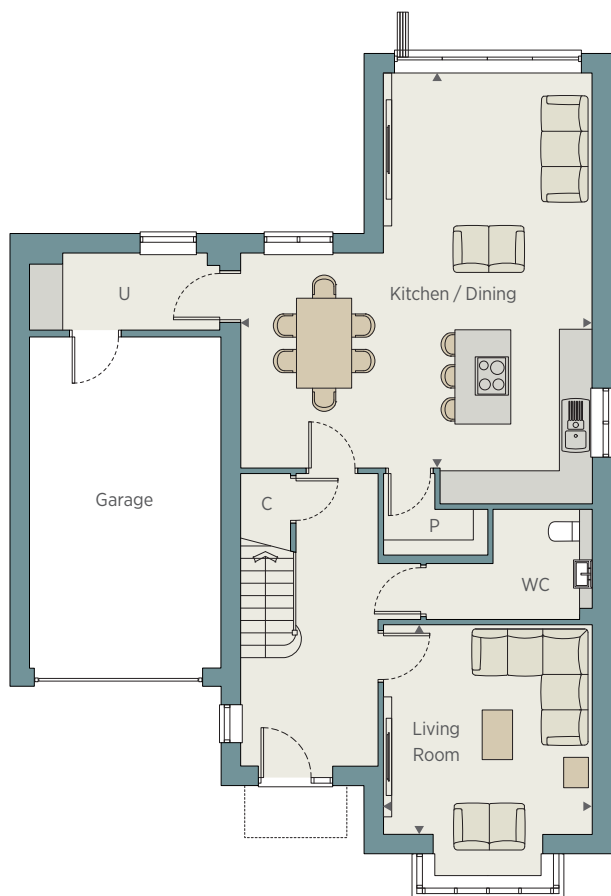
UC - Utility Cupboard C - Cupboard B - Bathroom ES - En suite



HOPE HOUSE (PLOT 10) | 4 BEDROOM HOME



SEE SPECIFICATION PAGE FOR DETAILS



GROUND FLOOR

Kitchen / Dining	7.16m x 6.37m	23'6" x 20'11"
Living Room	3.78m x 3.80m	12'5" x 12'6"
Garage	6.00m x 3.50m	19'8" x 11'6"



FIRST FLOOR

Bedroom 1	4.49m x 4.07m	14'9" x 13'4"
Bedroom 2	3.86m x 3.44m	12'8" x 11'3"
Bedroom 3	3.78m x 3.40m	12'5" x 11'2"
Bedroom 4 / Study	2.49m x 2.27m	8'2" x 7'5"

**Total area 172 sq m 1,851 sq ft - Loft space 24.1 sq m 259 sq ft**

C - Cupboard U - Utility P - Pantry B - Bathroom ES - En suite W - Wardrobe

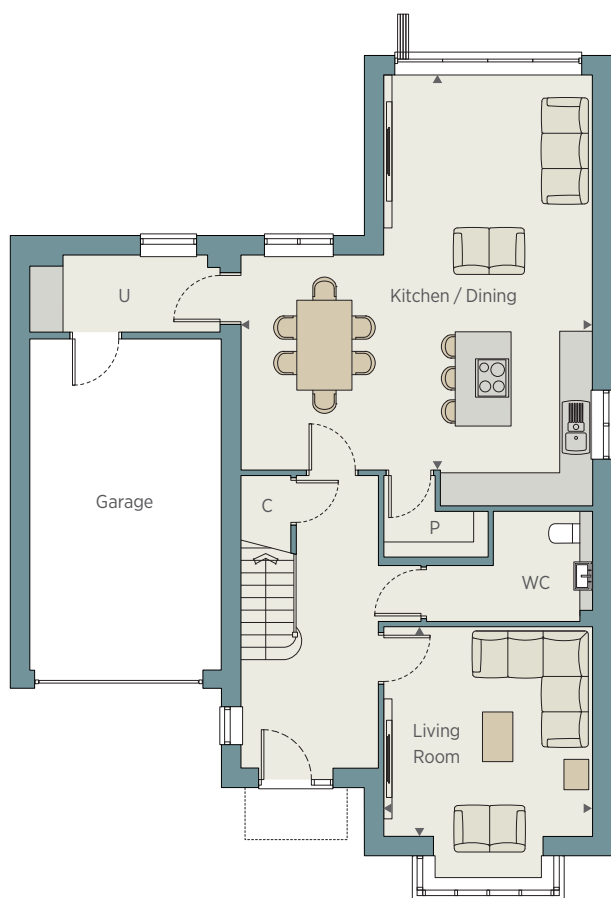
All room dimensions are subject to a +/- 50mm (2") tolerance. Kitchen and bathroom layouts are indicative only and may be subject to change. Please consult the Sales Advisor for specific room dimensions and internal layouts. This information is for guidance only and does not form any part of any contract or constitute a warranty. Computer generated illustration indicative only.



LOCK HOUSE (PLOT 11) | 4 BEDROOM HOME

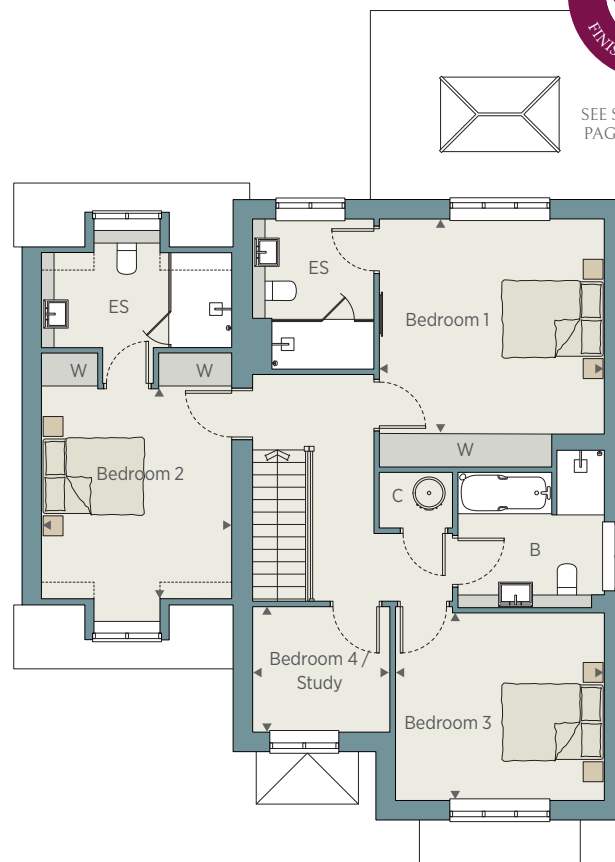


SEE SPECIFICATION PAGE FOR DETAILS



GROUND FLOOR

Kitchen / Dining	7.16m x 6.37m	23'6" x 20'11"
Living Room	3.78m x 3.80m	12'5" x 12'6"
Garage	6.00m x 3.50m	19'8" x 11'6"



FIRST FLOOR

Bedroom 1	4.49m x 4.07m	14'9" x 13'4"
Bedroom 2	3.86m x 3.44m	12'8" x 11'3"
Bedroom 3	3.78m x 3.40m	12'5" x 11'2"
Bedroom 4 / Study	2.49m x 2.27m	8'2" x 7'5"

**Total area 172 sq m 1,851 sq ft - Loft space 24.1 sq m 259 sq ft**

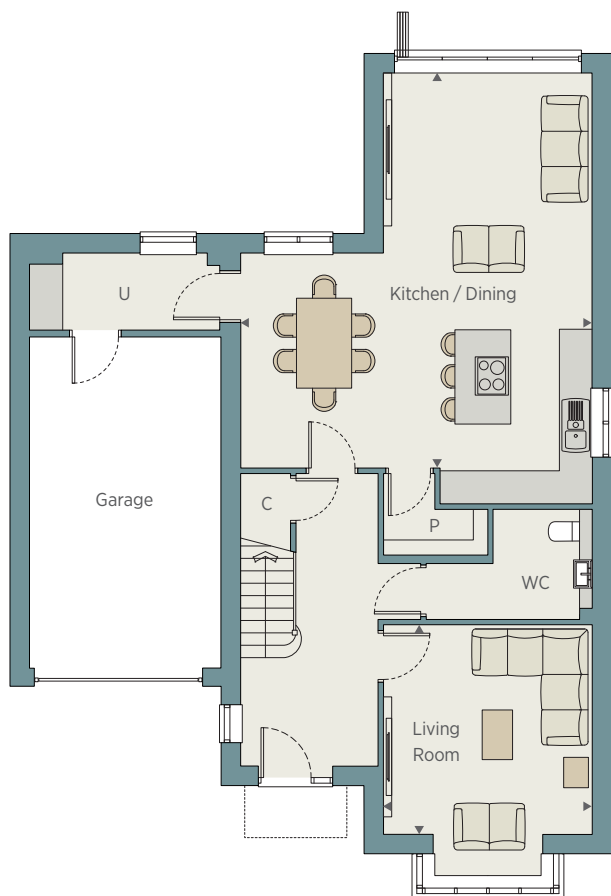
C - Cupboard U - Utility P - Pantry B - Bathroom ES - En suite W - Wardrobe



POETS HOUSE (PLOT 12) | 4 BEDROOM HOME



SEE SPECIFICATION PAGE FOR DETAILS



**GROUND FLOOR**

Kitchen / Dining	7.16m x 6.37m	23'6" x 20'11"
Living Room	3.78m x 3.80m	12'5" x 12'6"
Garage	6.00m x 3.50m	19'8" x 11'6"



**FIRST FLOOR**

Bedroom 1	4.49m x 4.07m	14'9" x 13'4"
Bedroom 2	3.86m x 3.44m	12'8" x 11'3"
Bedroom 3	3.78m x 3.40m	12'5" x 11'2"
Bedroom 4 / Study	2.49m x 2.27m	8'2" x 7'5"

**Total area 172 sq m 1,851 sq ft - Loft space 24.1 sq m 259 sq ft**

C - Cupboard U - Utility P - Pantry B - Bathroom ES - En suite W - Wardrobe

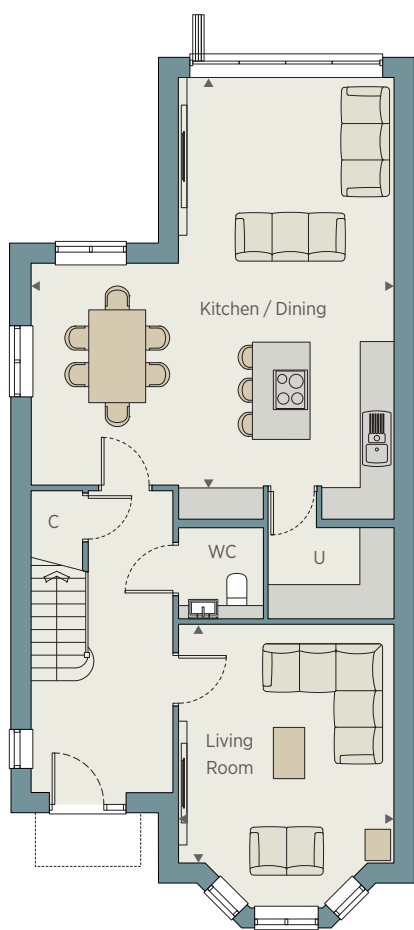
All room dimensions are subject to a +/- 50mm (2") tolerance. Kitchen and bathroom layouts are indicative only and may be subject to change. Please consult the Sales Advisor for specific room dimensions and internal layouts. This information is for guidance only and does not form any part of any contract or constitute a warranty. Computer generated illustration indicative only.



SPRING HOUSE (PLOT 13) | 4 BEDROOM HOME

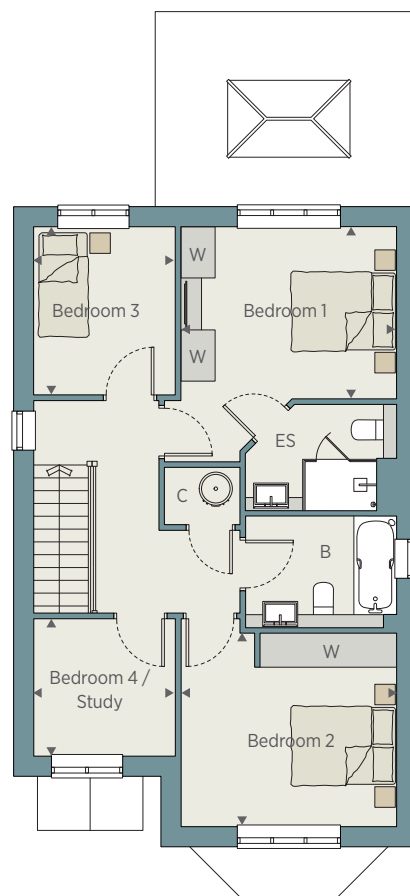


SEE SPECIFICATION PAGE FOR DETAILS



GROUND FLOOR

Kitchen / Dining	7.10m x 6.37m	23'3" x 20'11"
Living Room	4.19m x 3.78m	13'9" x 12'5"



FIRST FLOOR

Bedroom 1	3.78m x 3.02m	12'5" x 9'11"
Bedroom 2	3.78m x 3.40m	12'5" x 11'2"
Bedroom 3	2.95m x 2.49m	9'8" x 8'2"
Bedroom 4 / Study	2.49m x 2.41m	8'2" x 7'11"

**Total area 142 sq m 1,526 sq ft - Loft space 24.5 sq m 264 sq ft**

C - Cupboard U - Utility B - Bathroom ES - En suite W - Wardrobe

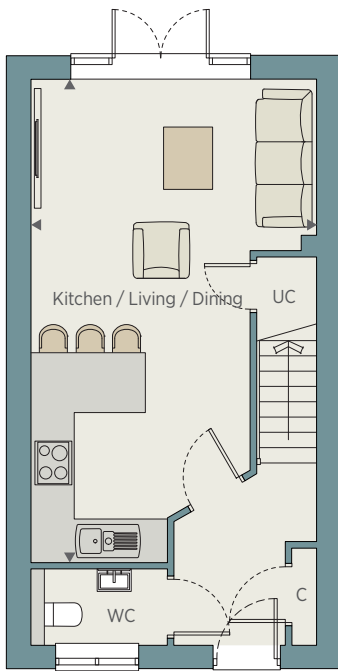




PLOT 21

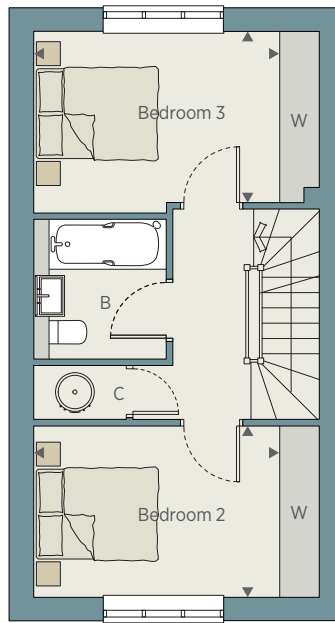
PLOT 20

TEMPLE HOUSE (PLOT 20) & WINDSOR HOUSE (PLOT 21) | 3 BEDROOM HOME



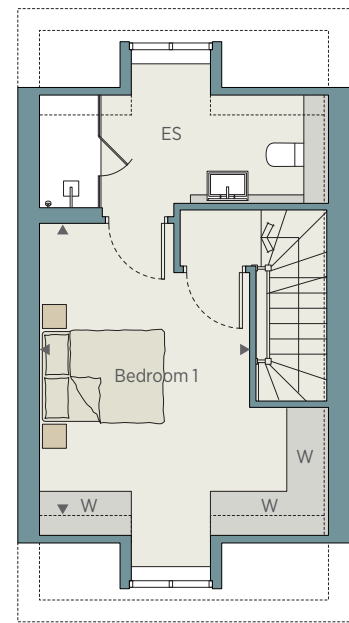
GROUND FLOOR

Kitchen / Living / Dining 7.26m x 4.29m 23'10" x 14'1"



FIRST FLOOR

Bedroom 2	3.64m x 2.57m	11'11" x 8'5"
Bedroom 3	3.64m x 2.73m	11'11" x 8'11"



SECOND FLOOR

Bedroom 1	4.41m x 3.34m	14'5" x 10'11"
-----------	---------------	----------------

**Total area 109 sq m 1,168 sq ft**

UC - Utility Cupboard C - Cupboard B - Bathroom ES - En suite W - Wardrobe

All room dimensions are subject to a +/- 50mm (2") tolerance. Kitchen and bathroom layouts are indicative only and may be subject to change. Please consult the Sales Advisor for specific room dimensions and internal layouts. This information is for guidance only and does not form any part of any contract or constitute a warranty. Computer generated illustration indicative only.